

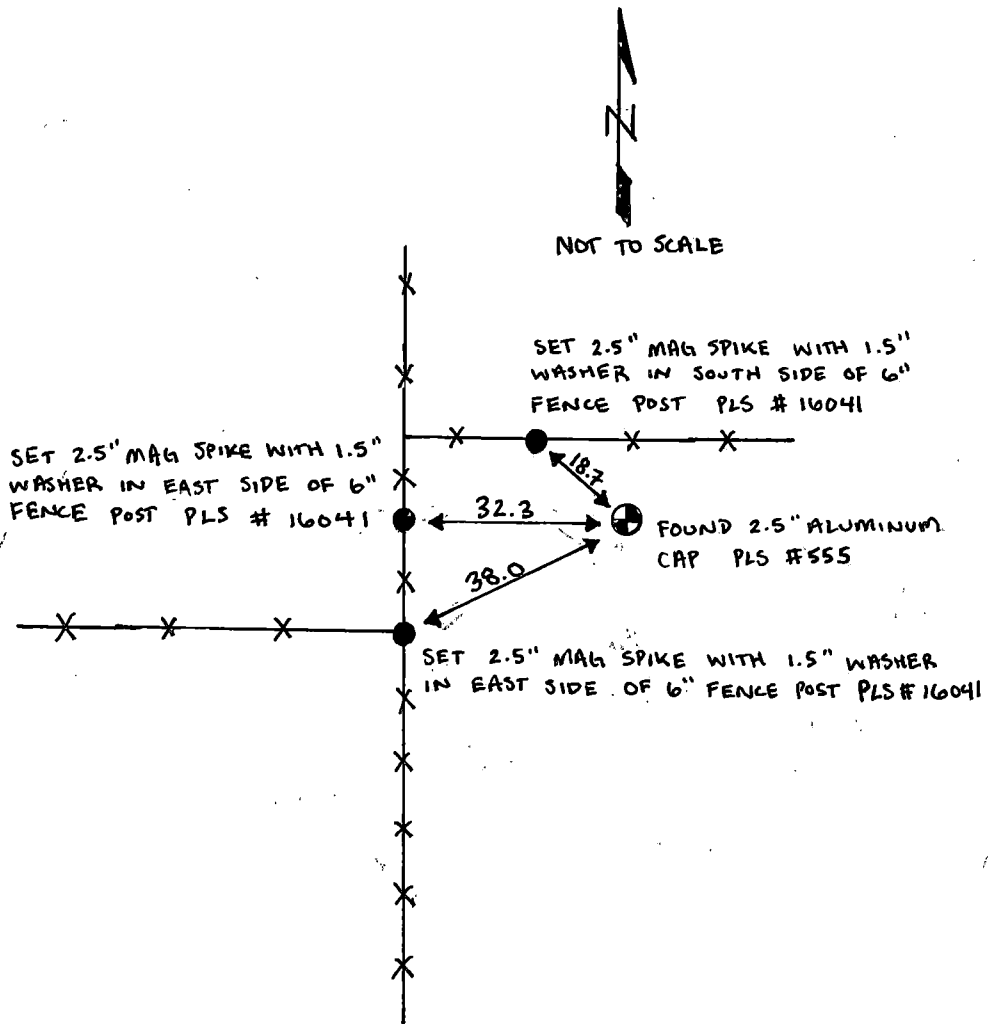
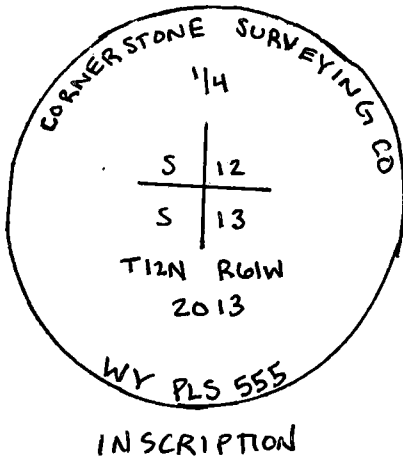
State of Wyoming Corner Record

(In compliance with the *CORNER PERPETUATION AND FILING ACT*, Wyoming Statutes, 1997, Section 33-29-140, et seq., and the Rules and Regulations of the Board of Registration for Professional Engineers and Professional Land Surveyors)

Reverse side of this form may be used if more space is needed.

Record of original survey and citation of source of historical information (if corner is lost or obliterated). Description of corner monumentation evidence found and/or monument and accessories established to perpetuate the location of this corner. Sketch of relative location of monument, accessories, and reference points with course and distance to adjacent corner(s) (if determined in this survey). Method and rationale for reestablishment of lost or obliterated corner.

QUARTER CORNER 12, 13 T12N, R61W, 6TH PM, LARAMIE COUNTY, WYOMING
FOUND: 2.5" ALUMINUM CAP SET BY WY PLS #555 IN 2013

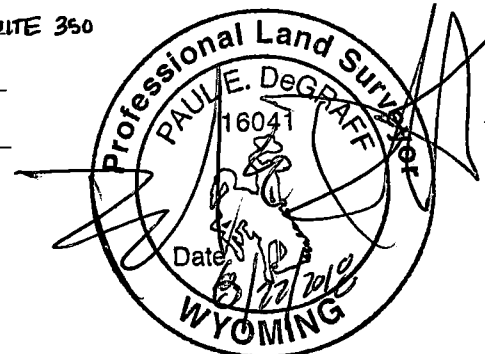


Date of Field Work: June 1st 2018 Office Reference: #61499

CROSS INDEX DIAGRAM

	1	2	3	4	5	6	7	8	9	10	11	12	13	14	15	16	17	18	19	20	21	22	23	24	25
A																									
B																									
C																									
D																									
E																									
F																									
G																									
H																									
J																									
K																									
L																									
M																									
N																									
O																									
P																									
Q																									
R																									
S																									
T																									
U																									
V																									
W																									
X																									
Y																									
Z																									

Land Surveyor / Firm / Address This corner record was prepared by me or under my direction and supervision.
PAUL DELGRAFF PLS # 16041 SEAL & SIGNATURE
ENCOMPASS ENERGY SERVICES LLC
350 INTERLOCKEN BLDG SUITE 350
BROOMFIELD, CO 80021
 Telephone: 303-955-6080



Corner Name: NORTH QUARTER CORNER Section: 13 T 12N R 61W ; 6TH P.M. Cross-Index No.: J-23
 SBRPEPLS/PLSW: March 1994; PLSW January 1998